

보석 감별서

Report of Gem Identification

No. 04268548

Date 2017-04-26

감별서 - IDENTIFIED STONE

- Orient effect -

색 · 투명도

Color · Transp. pinkish white, Translucent

Cultured Pearl(Drop shape):

10.2mm(width) x 1pc

최도 · 수량

Size · Quantity Imitation Pearl(Bead): 7.7 - 8.0mm x 61pcs

형상 Drop shape/ Bead

Cutting · Setting Mounted necklace

Total Weight(metal+gem material): 26.28g

검사항목 - TESTS

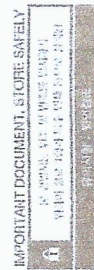
☐ 굴절률 Refractive Index ☐ 편광성 Polariscopes Test

☐ 다색성 Pleochroism ☒ 형광성 Fluorescence

☐ 비중 Specific Gravity ☐ 컬러필터 검사 Color filter Test

☐ 분광성 Absorption Spectrum

☒ 확대검사 Magnification



Security features

To ensure integrity, our report of gem identification include a code of security components. Reliable features include a security screen, in addition to several other proprietary security features.

본 보고서의 진위 여부를 확인하기 위하여 QR코드를 스캔하십시오.

공학 박사

김영률

Dr.

대한상공회의소
Korea Chamber of Commerce & Industry

산업통상자원부
Ministry of Industry, Trade & Energy

ISO 9001
국제표준 인증

한국산업규격 (Korean Industrial Standard)
Korean Industrial Standard

세계보석협회
World Gemological Association

ICGL 국제감정원 협의
International Gemological Laboratory

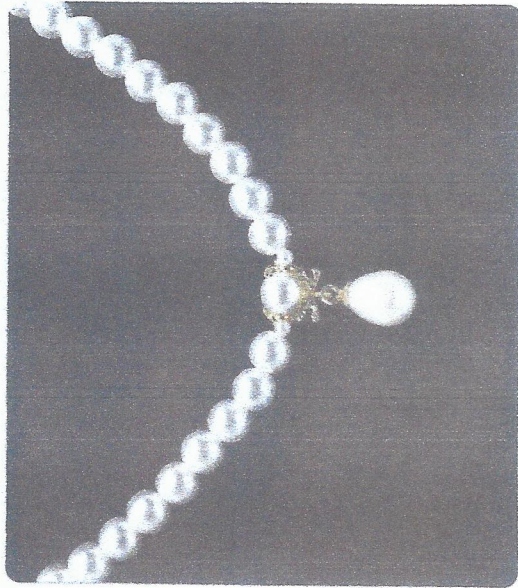
국내 최초 정회원 등록

최원단 과학 감정원
(주) 한미보석감정원
Hanmi Gemological Institute, Laboratory

한국보석학회
Korean Gemological Association
F.G.A. (미국보석학회)
G.G.A. (미국보석학회)
A.G.A. (미국보석학회)
M.V. (미국보석학회)

(주) 한미보석감정원

Hanmi Gemological Institute, Laboratory (Hanmi Lab)



감별 결과
Conclusion

중량
Weight

소재명(Material)

진주(Cultured Pearl)/

보조석 Imitation Pearl(Small): 2pcs
Side stones Rhinestone(Glass/Colorless): 2pcs

2014. 08

TEL: 02-3672-2800, FAX: 02-3672-2803